

Life amidst the  
tranquility





GR Sunshine is elegantly designed on 2.25 acres of land amidst the tranquility of Chikkabellandur and yet within a five minutes drive from wipro corporate office and 10 minutes drive from Cisco Campus on outer ring road. Also located in proximity to GR Sunshine are reputed educational institutions.

The entire project consists of 3 wings within which are aesthetically designed 165 single level flats, 9 duplexes and 3 penthouses to suit your lifestyle.

This gated community is conceived to provide the discerning young families with high quality housing with latest construction methods and loaded with amenities at true value prices.

The clubhouse will rejuvenate you with amenities like Departmental store, Games room, GYM, Billiards, table tennis, Laundromat and party hall.

Outdoor amenities like Children's play area, Badminton court, Volley ball court, Cricket practice pitch & delectable verdant landscape will provide zing to your life.

Choose your abode entrenched in nature and stake your claim to peaceful living.....





CHILDREN'S  
PLAY  
AREA

BADMINTON

VOLLEY BALL

PRACTICE CRICKET PITCH

6.0M WIDE DRIVEWAY FOR FIRE TENDER MOVEMENT

VISITORS CAR PARKING

WING-A  
(B+G+8 FLRS)

WING-B  
(B+G+8 FLRS)

WING-C  
(B+G+8 FLRS)

CLUBHOUSE  
(B+G+2 FLRS)

6.0M WIDE DRIVEWAY FOR FIRE TENDER MOVEMENT

VISITORS CAR PARKING

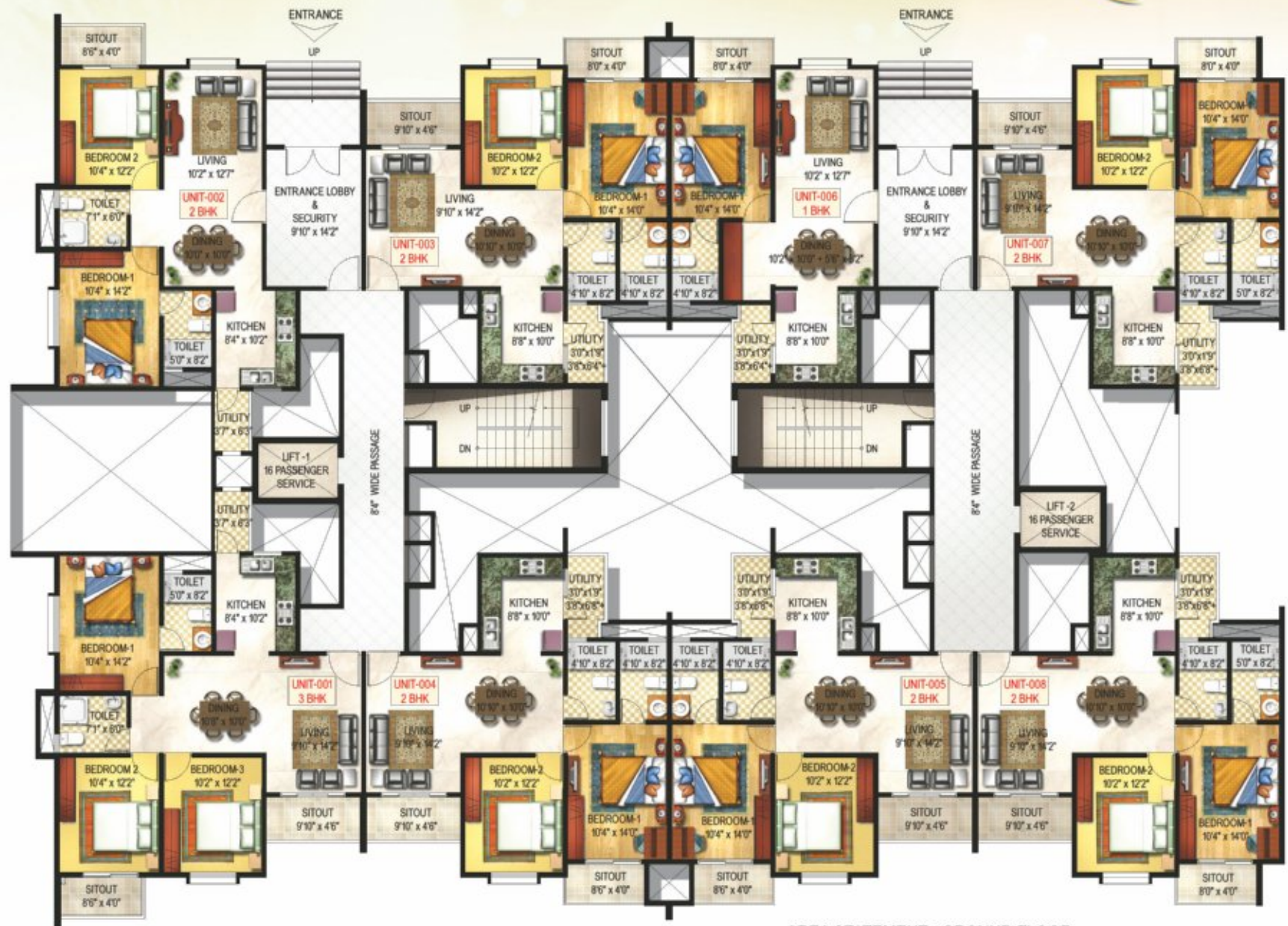
3.50M WIDE ENTRY RAMP

TOWARDS GUNJUR

TOWARDS  
SARJAPUR ROAD







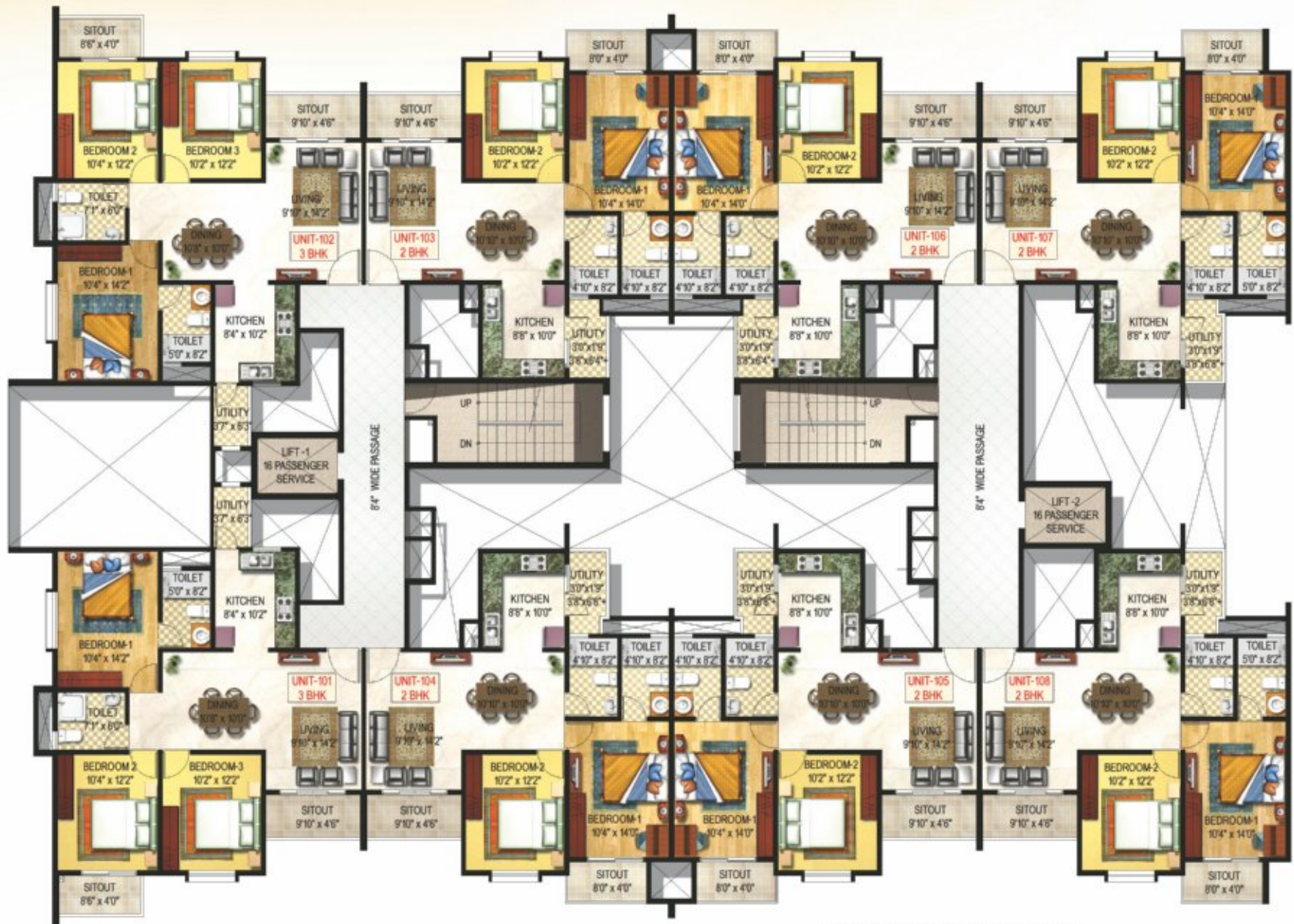
AREA STATEMENT - GROUND FLOOR

UNIT	TYPE	CARPET AREA	SBU AREA
001	3 BHK	951	1279
002	2 BHK	760	1031
003	2 BHK	807	1076
004	2 BHK	808	1078
005	2 BHK	808	1078
006	1 BHK	617	833
007	2 BHK	809	1089
008	2 BHK	809	1089

ALL AREAS ARE IN SQ.FT



Ground Floor Plan ( WING-A )



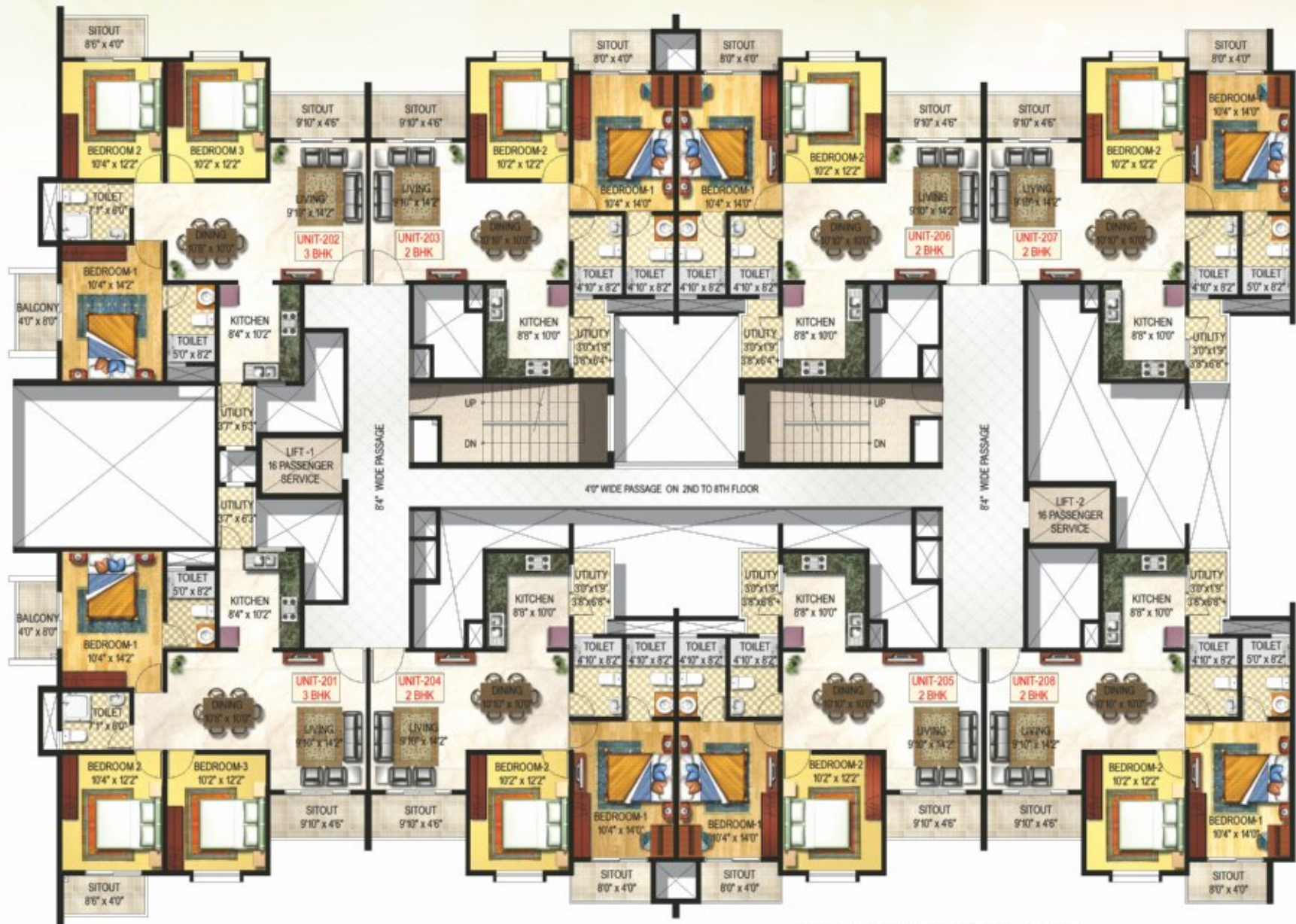
First Floor Plan ( WING-A )

AREA STATEMENT - FIRST FLOOR

UNIT	TYPE	CARPET AREA	SBU AREA
101	3 BHK	951	1279
102	3 BHK	951	1279
103	2 BHK	807	1076
104	2 BHK	808	1078
105	2 BHK	808	1078
106	2 BHK	807	1076
107	2 BHK	809	1089
108	2 BHK	809	1089

ALL AREAS ARE IN SQ.FT





AREA STATEMENT - TYPICAL FLOOR

UNIT	TYPE	CARPET AREA	SBU AREA
201	3 BHK	987	1327
202	3 BHK	987	1327
203	2 BHK	807	1076
204	2 BHK	808	1078
205	2 BHK	808	1078
206	2 BHK	807	1076
207	2 BHK	809	1089
208	2 BHK	809	1089

ALL AREAS ARE IN SQ.FT



Typical (2nd TO 8th) Floor Plan ( WING-A )







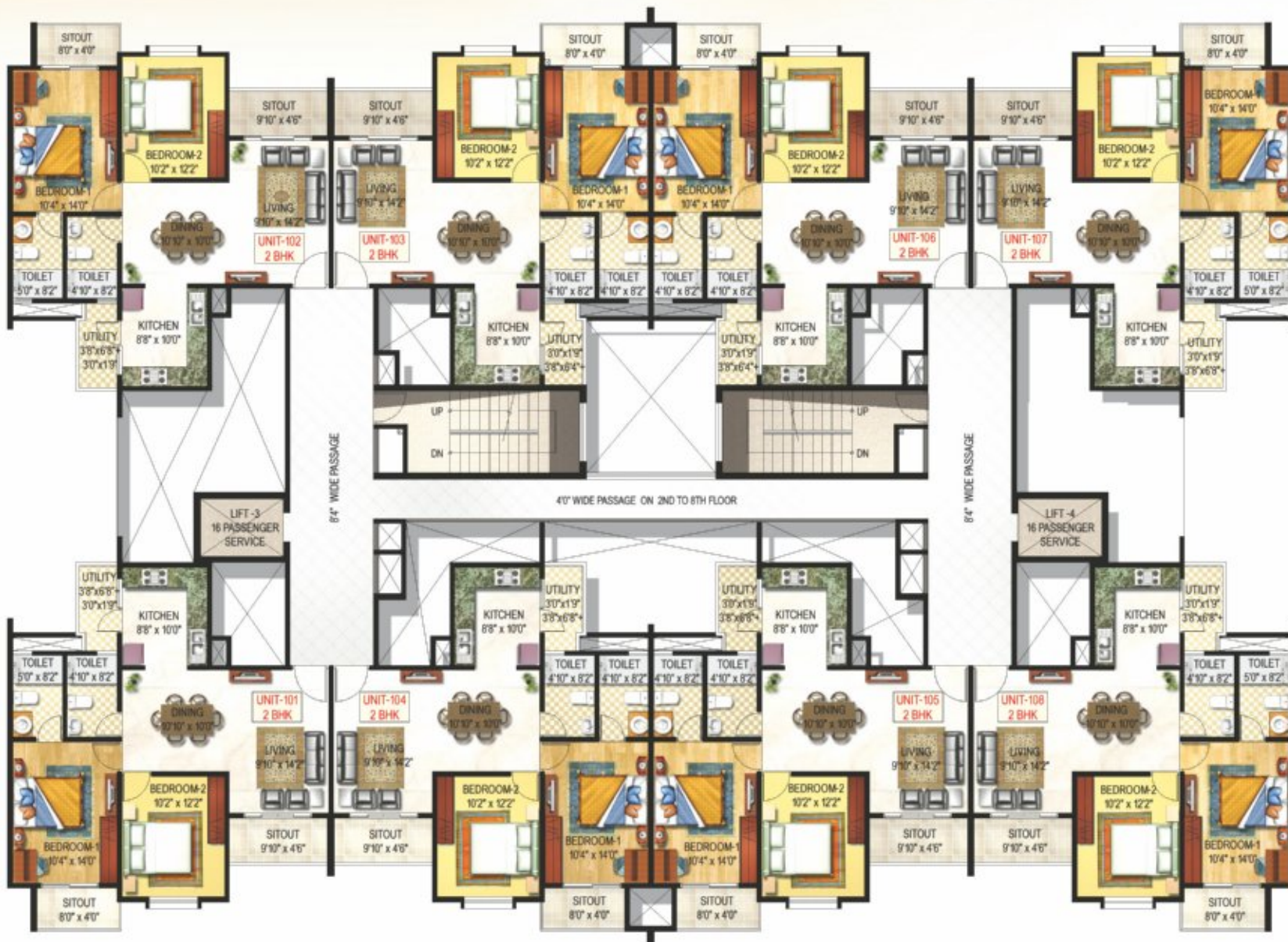
AREA STATEMENT - GROUND FLOOR

UNIT	TYPE	CARPET AREA	SBU AREA
001	2 BHK	809	1089
002	1 BHK	619	840
003	2 BHK	807	1076
004	2 BHK	808	1078
005	2 BHK	808	1078
006	1 BHK	617	833
007	2 BHK	809	1089
008	2 BHK	809	1089

ALL AREAS ARE IN SQ.FT



Ground Floor Plan ( WING-B )



Typical (1st TO 8th) Floor Plan ( WING-B )

AREA STATEMENT - TYPICAL FLOOR

UNIT	TYPE	CARPET AREA	SBU AREA
101	2 BHK	809	1089
102	2 BHK	809	1089
103	2 BHK	807	1076
104	2 BHK	808	1078
105	2 BHK	808	1078
106	2 BHK	807	1076
107	2 BHK	809	1089
108	2 BHK	809	1089

ALL AREAS ARE IN SQ.FT





#### AREA STATEMENT - GROUND FLOOR

UNIT	TYPE	CARPET AREA	SBU AREA
001	3 BHK	1120	1508
002	3 BHK	1110	1487
003	3 BHK	1099	1472
004	1 BHK	708	965
005	2 BHK	930	1250

ALL AREAS ARE IN SQ.FT

Ground Floor Plan ( WING-C )





AREA STATEMENT - 1st,3rd & 5th FLOOR

UNIT	TYPE	CARPET AREA	SBU AREA
101/301/501	4 BHK	2019	2766
102/302/502	4 BHK	2003	2740
103/303/503	4 BHK	1981	2710
104/304/504	2 BHK	930	1250
105/305/505	2 BHK	930	1250

ALL AREAS ARE IN SQ.FT



Typical 1st, 3rd & 5th Floor Plan ( WING-C )



Typical 2nd, 4th & 6th Floor Plan ( WING-C )











AREA STATEMENT - 7th FLOOR

UNIT	TYPE	CARPET AREA	SBU AREA	TERRACE
701	4 BHK	1850	2523	391
702	4 BHK	1834	2494	380
703	4 BHK	1812	2464	380
704	2 BHK	930	1250	----
705	2 BHK	930	1250	----

ALL AREAS ARE IN SQ.FT

7th Floor Plan ( WING-C )





AREA STATEMENT - 8th FLOOR

UNIT	TYPE	CARPET AREA	SBU AREA
804	2 BHK	930	1250
805	2 BHK	930	1250

ALL AREAS ARE IN SQ.FT

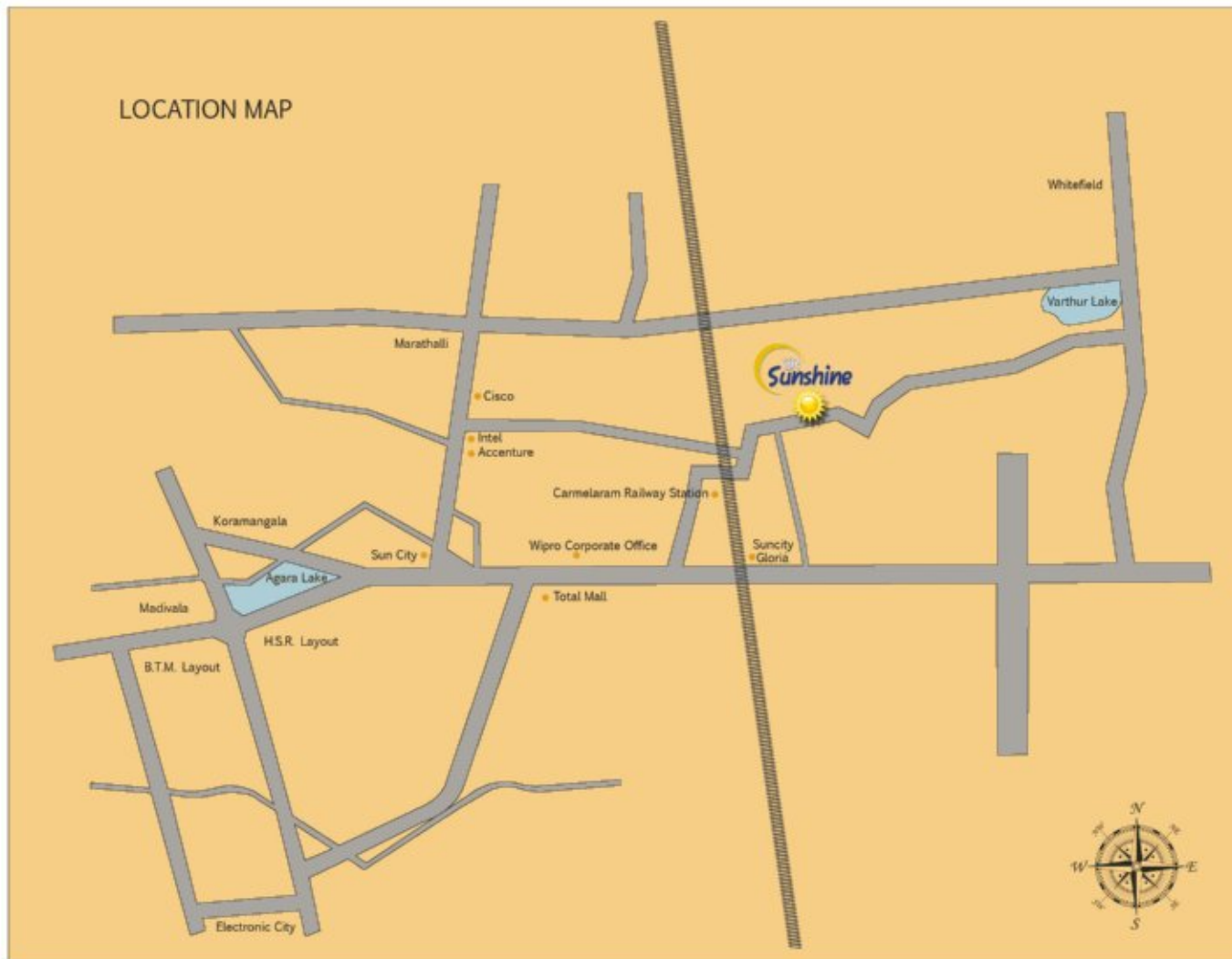
8th Floor Plan ( WING-C )



## SPECIFICATIONS

<b>Structure</b>	: RCC framed structure.
<b>Walls</b>	: External walls are 8" Porotherm Brick walls; Internal walls are 6" Porotherm Brick walls.
<b>Lobbies &amp; Corridors</b>	: All lobbies and corridors elegantly finished in Granite / Vitrified tiles.
<b>Doors</b>	: Main door- Teak Wood door frame with threshold and flush door shutter finished with Veneer on both sides;
<b>Internal doors</b>	: Sal Wood door frame with flush shutters with enamel paint.
<b>Windows</b>	: Glazed UPVC sliding windows with mosquito mesh and MS grills.
<b>Flooring</b>	: Vitrified tiles in living / dinning, kitchen & bedrooms. Laminate flooring in Master bedroom. Anti-skid ceramic tiles for Balcony, Utility and toilets.
<b>Internal painting</b>	: All walls finished in Emulsion paint.
<b>External painting</b>	: Cement based anti-fungal paint.
<b>Kitchen / Utility</b>	: Kitchen counter in granite, fixed on brackets with 24" dado over the counter in glazed tiles with stainless steel sink & CP fittings; Utility: washing machine point with inlet & outlet.
<b>Toilets</b>	: White EWC and wash basins (Parryware slimline or equivalent make) with CP fittings (jaquar or equivalent make ), flooring with anti-skid ceramic tiles and wall cladding up to 7 feet height in glazed ceramic tiles.
<b>Water supply</b>	: CPVC fittings and piping for water supply; High quality HDPE pipes for sewer lines.
<b>Electrical</b>	: Switches-Modular switches (Anchor,Roma make or equivalent); Wiring- Quality copper wire (Anchor or Equivalent make) with all necessary MCBs and ELCBs; AC point in Master bedroom.
<b>Backup Power</b>	: 100% backup power available for all common area's, lifts, lobbies and staircases. 0.5 KVA power for each apartment for lights and fan points.
<b>Telephone / Data</b>	: FTTH ( fibre to the home) upto 100mbps with broad band, Voice & Intercom. One point each in Living & Master bedroom.
<b>Cable TV / DTH</b>	: CTV through MDU (multi-dwelling unit) service. One point each in the living & Master bedroom.
<b>Security</b>	: Multi-layered security with video door phone.
<b>Lifts</b>	: Wing A & Wing B has 2 nos of 16 Passenger / service lift each. Wing C has one 8 Passenger & one 16 passenger / Service Lift.
<b>Fire fighting</b>	: Fire fighting as per norms of the Fire department and NBC code.





## GR PROJECTS & INFRASTRUCTURE DEVELOPMENTS PVT LTD

**Registered Office:** Unit 002, Block - 06, Ground Floor, Suncity, Outer Ring Road, Bangalore - 560 103  
Phone: 080 41261029, 41482015, Mobile: 9686205119, 9686205118

**Corporate Office:** 79/3, Ground Floor, Near Central Mall, Outer Ring Road, Bellandur, Bangalore - 560 103  
Phone: 8880681616, 9686205119, 9686205118  
[www.grprojects.in](http://www.grprojects.in) e-mail: [info@sunshine.in](mailto:info@sunshine.in)